



**ORTHODONTICS.
A BEAUTIFUL SMILE
FOR A BETTER LIFE.**

Aster
HOSPITAL

We'll Treat You Well



Digital Version



WHY ORTHODONTICS

Orthodontics is a highly specialized field of dentistry concerned with the growth of the teeth, jaws and face and corrects the teeth and jaw that are positioned improperly.

Orthodontic treatment is about making the best of your teeth; it's about improving the harmony of your mouth and jaws. Once you can bite together correctly, you can eat more comfortably and care for your teeth and gums more easily for enhancing facial esthetics. And your smile will benefit immensely!

Achieve a beautiful straight smile with our advanced orthodontic treatments. A crooked smile (malocclusion) can have a negative impact on the way you look, feel and conduct yourself on day to day basis. Benefits of orthodontic treatment include a healthier mouth, a more pleasing appearance, and teeth that are more likely to last a lifetime.

Orthodontic treatment can be a great

tool at any stage of life-for children, adolescents and even adults. A straight smile gets a great foundation for good looks.

WE OFFER A RANGE OF INNOVATIVE ORTHODONTIC OPTION TO FIT YOUR SMILE AND LIFESTYLE.



Many options are available today to minimize the appearance of braces. Today's appliances are smaller and sleeker, and some are next to invisible. Your Orthodontist can help you achieve

the confidence that comes with a healthy and attractive smile.

We provide you with the latest orthodontic treatment technologies, including tooth colored braces, invisible braces, Invisalign (without braces) and Growth Modulation Appliance Systems.

We offer cost effective braces that can correct mild to moderate upper or lower

anterior crowding, common concern for many of our patients who do not want protracted fixed appliance therapy or expensive multi-tray treatment.

It includes alignment of irregularly placed teeth, correction of crowded, malpositioned, rotated, proclined, retroclined and spacing of teeth for better esthetics and functions.

PRE-TREATMENT



DURING-TREATMENT



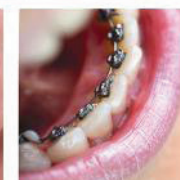
POST-TREATMENT



LINGUAL BRACES - INVISIBLE BRACES



This is a fixed orthodontic braces placed on the inside of the teeth. It is completely invisible from outside.



STRAIGHT WIRE TOOTH COLOURED ESTHETIC BRACES-CERAMIC BRACES



Straight wire metal braces

SELF LIGATING BRACES –LIGATURE-LESS BRACES SYSTEM:



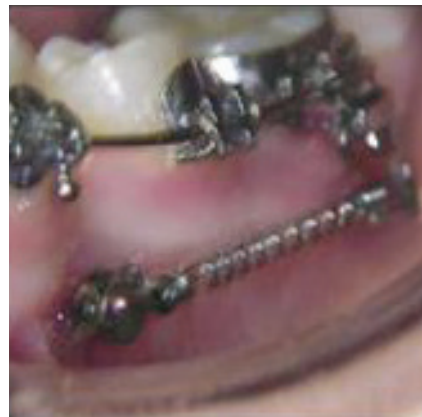
It is a self-locking, mechanical device system built into the braces to close off the slot, to avoid metal tie-wires.

TIP EDGE APPLIANCE



It combines an initial degree of tooth tipping, which greatly facilitates tooth movement, prior to edgewise precision finishing.

MICRO SCREW AND MINISCREW IMPLANT SYSTEM



Temporary devices for absolute anchorage; enhances treatment duration and efficiency. It is a bone anchor made of titanium that looks like a miniature version of a wood screw.

DISTALIZATION

Extraction mechanotherapy indicated in

patients with good soft tissue profile. It is a comfortable, aesthetic, cost effective appliance that can be worn full time.

2X4 APPLIANCE - UTILITY ARCH

An appliance for pre-teenagers for correction of alignment and space management.

PENDULUM MOLAR DISTALIZATION

Pend - X - Distalization and Arch Expansion

PRE-TREATMENT



MOLAR DISTALIZATION



POST TREATMENT



INVISALIGN TREATMENT WITHOUT BRACES



Many patients who want to avoid wearing traditional braces for aesthetic reasons choose Invisalign invisible braces.

The Invisalign treatment system utilizes a series of clear retainers (aligners) that move your teeth and is used for treatment of spacing and irregularly arranged teeth using CAD-CAM technology.

GROWTH MODULATION TREATMENT MODALITIES (AGE 7-14 YEARS)

For the early correction and management of skeletal abnormalities during the growth period. This includes: deficient or excessive maxilla, deficient or excessive mandibular growth, protruded or retruded chin by means of myofunctional appliance.

PRE-TREATMENT



DURING TREATMENT



POST TREATMENT



- a. Twin block
- b. Jasper Jumper
- c. Twin Block with Concorde Face Bow
- d. Herbst appliance
- e. Forsus appliance
- f. Head gear therapy
- g. Activator
- h. Bionator
- i. RME and Reverse Pull Head Gear
- j. Chin cup

PROGNATHIC MAXILLA



PROGNATHIC MANDIBLE



PRE-TREATMENT



DURING TREATMENT



POST TREATMENT



HABIT BREAKING APPLIANCE

The prevention and correction of harmful oral habits (tongue thrusting, mouth breathing, thumb sucking, bruxism/teeth grinding, lip biting) which leads to improper dental occlusion

- Removable or Fixed Tongue Crib

PRE-TREATMENT



POST TREATMENT



- Flexible Oral Screen
- Lip Bumper
- Flexible Splint for bruxism



ARCH EXPANSION

For expansion of constricted or narrow maxillary arch, in posterior cross-bites, skeletal retrognathic maxilla, cleft patients with collapsed maxillary arch, nasal stenosis, septal deformities and in facemask therapy.

- Bonded/Banded Rapid Maxillary Expander - HYRAX
- Quad Helix
- Correction of anterior crossbite:

Removable / Fixed appliances with Quad helix and Expansion screws.

- Jack Screw for Slow Maxillary Expansion



SPACE MAINTAINER / SPACE REGAINER

Space maintainers are the devices used to maintain the space created by the premature loss of deciduous dentition. Space regainers are used to re establish the space lost due to drifting of the adjacent teeth.



- Removable/fixed distal shoe space maintainer
- Fixed Band & loop space maintainer
- Fixed lingual arch space maintainer
- Gerber space regainer

DISIMPACTION TREATMENT.

Guiding the eruption of a tooth, for better esthetics and function, which is completely or partially unerupted & is positioned against another tooth, bone or soft tissue, so that its further eruption is unlikely.

This procedure involves surgical exposure of the unerupted tooth, application of force via attachment bonded to it and bringing the tooth to its normal position.

PRE-TREATMENT



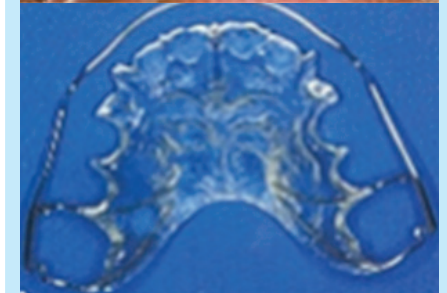
DURING TREATMENT



POST TREATMENT



REMOVABLE APPLIANCES



For Generalized spacing, midline spacing, mild proclination, deep bite, single tooth cross-bite, retention etc...

- Hawley's appliance
- Anterior & posterior bite planes
- Single & double cantilever springs
- Catalan's appliance
- Flexible Nightguard

RETAINERS



Retainers are the appliances used to maintain and stabilize the position of teeth achieved after orthodontic treatment.

- Essix Retainer
- Begg's Retainer
- Clip - on Retainer
- Invisible Retainer

FIXED RETAINERS

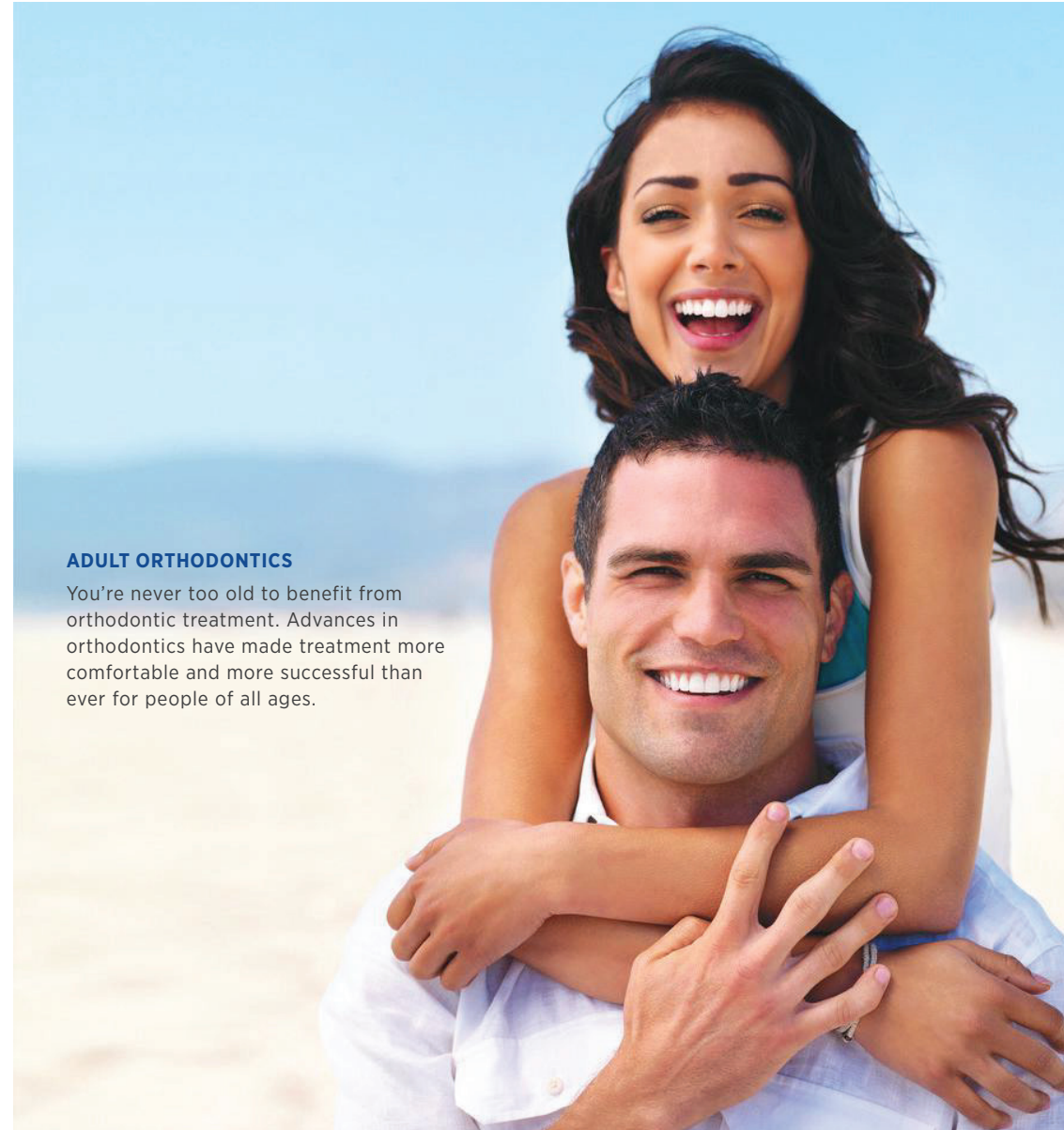


These are the retainers placed on the inner aspect of the teeth

- 4-4 lingual bonded retainer
- 3-3 lingual bonded retainer

ADULT ORTHODONTICS

You're never too old to benefit from orthodontic treatment. Advances in orthodontics have made treatment more comfortable and more successful than ever for people of all ages.





PLEASE SCAN FOR
THE LOCATION

Aster HOSPITAL

We'll Treat You Well

Mankhool, Kuwait Road, Al Mankhool - Dubai

📞 04 440 0500 🌐 asterhospitals.com 📱 📧 📺 asterhospital

DEPARTMENTS

Accident & Emergency • Anesthesiology • Cardiology • Clinical Nutrition
Dental Centre • Dermatology • ENT • General Surgery • Insurance
Internal Medicine • Laboratory Services • Neurosurgery • Ophthalmology
Obstetrics & Gynaecology • Orthopedics • Patient Affairs